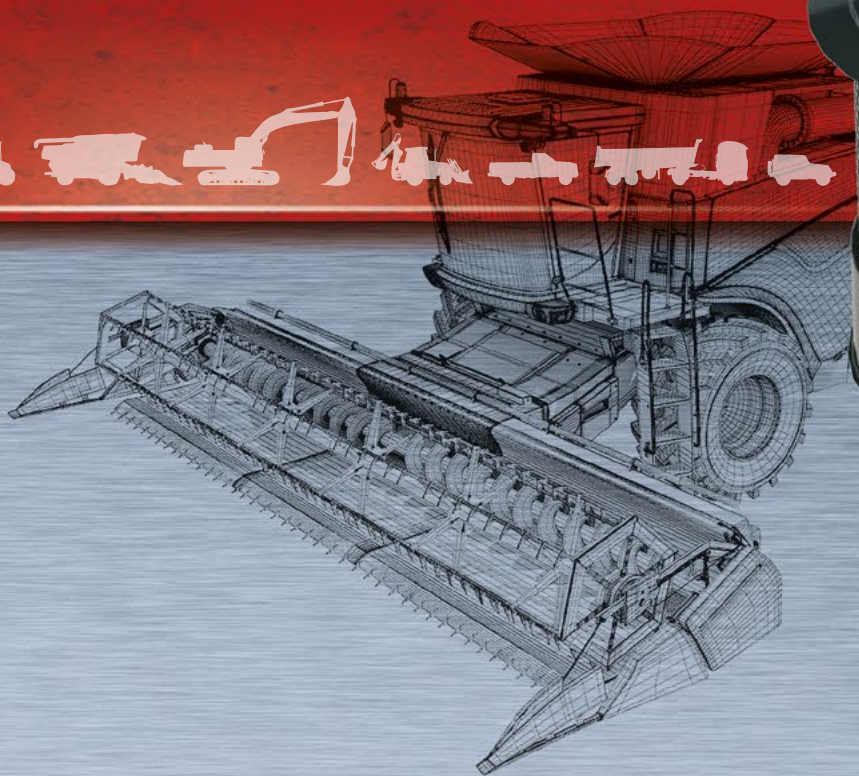




o'cuatro

advanced filtration technology



PP



DYNAMIC ENGINE AIR PRECLEANERS

For Under Hood Applications

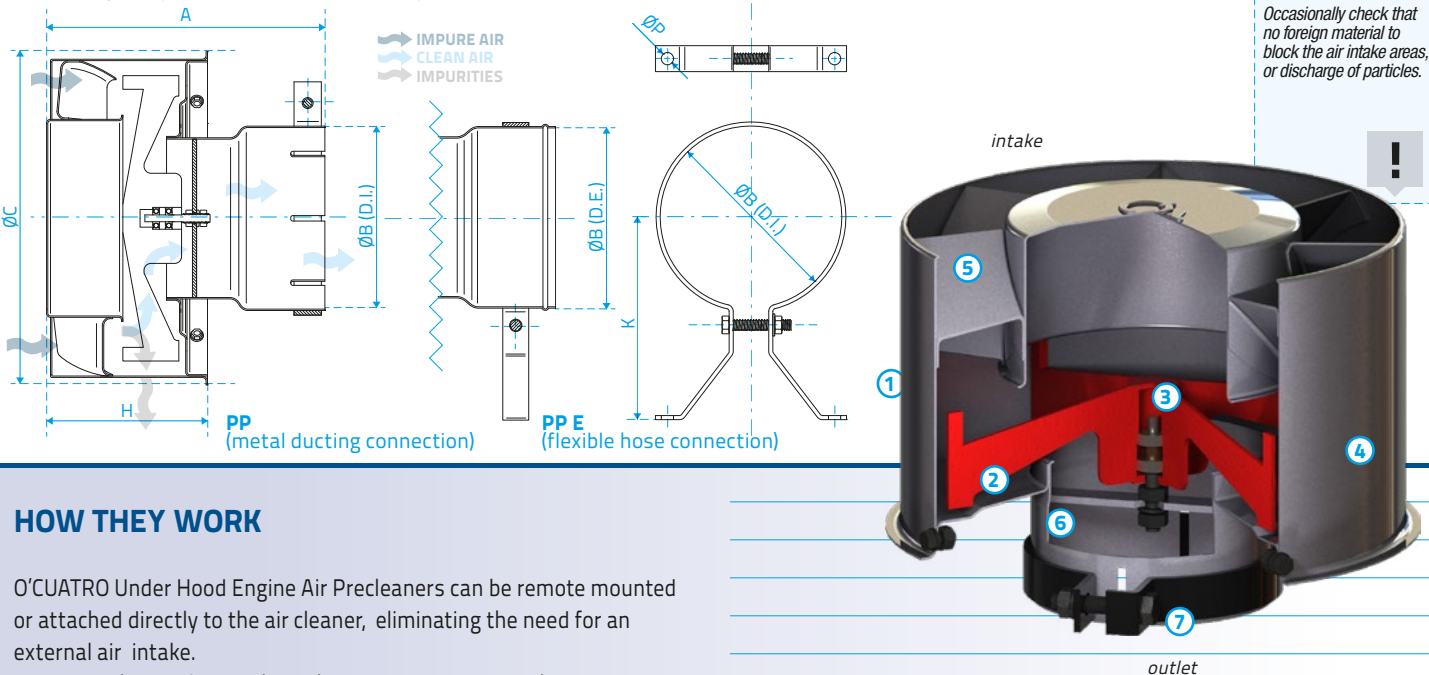
1,5 to 30,0
m³/min.

These Air Precleaners consist of a steel housing with static vanes and a rust-proof rotor mounted on dual ball bearings over double-welded plate steel. The outlet tube can be connected to metal ducting using the supplied reduction sleeves or to a flexible hose connection ("E" models).

O'CUATRO Engine Air Precleaners are powder coated for a durable, corrosion-resistant finish. Air flows range from 53 to 988 CFM (1.5 to 28.0 m³/min).

MODEL	AIRFLOW RANGE m ³ /min (CFM)	HORSEPOWER RANGE HP (Kw)	WEIGHT Kg. (Lbs.)	Dimensions					
				A mm (") ⁽³⁾	H mm (")	ØB mm (") ⁽⁴⁾	ØC mm (")	K mm (")	ØP mm (")
PB 005	1.5 - 2.5 (53 - 88)	30 - 45 (22 - 33)	0.60 (1.30)	116 (4.57)	82 (3.22)	51; 57; 63 (2.0; 2.25; 2.5)	133 (5.25)	-	-
PB 005E	1.5 - 2.5 (53 - 88)	30 - 45 (22 - 33)	0.90 (2.00)	139 (5.47)	82 (3.22)	51; 57; 63 (2; 2.25; 2.5)	133 (5.25)	145 (5.71)	9 (0.35)
PB 006	1.5 - 4.0 (53 - 141)	30 - 60 (22 - 45)	0.80 (1.75)	116 (4.57)	85 (3.35)	63 (2.5)	143 (5.63)	-	-
PB 006E	1.5 - 4.0 (53 - 141)	30 - 60 (22 - 45)	1.10 (2.40)	142 (5.60)	85 (3.35)	63 (2.5)	143 (5.63)	145 (5.71)	9 (0.35)
PB 007	4.0 - 5.0 (141 - 176)	60 - 70 (45 - 52)	1.30 (2.86)	167 (6.57)	105 (4.13)	70; 76 (2.75; 3)	180 (7.08)	-	-
PB 007E	4.0 - 5.0 (141 - 176)	60 - 70 (45 - 52)	1.40 (3.08)	172 (6.77)	105 (4.13)	76 (3)	180 (7.08)	116 (4.57)	9 (0.35)
PP 021	5.0 - 8.0 (176 - 282)	70 - 100 (52 - 75)	1.60 (3.52)	154 (6.06)	109 (4.30)	102; 82 (4; 3.25)	200 (7.87)	-	-
PP 021E	5.0 - 8.0 (176 - 282)	70 - 100 (52 - 75)	1.85 (4.07)	164 (6.45)	109 (4.30)	82 (3.25)	200 (7.87)	130 (5.12)	9 (0.35)
PP 041	8.0 - 12.0 (282 - 423)	100 - 140 (75 - 104)	1.95 (4.30)	197 (7.75)	138 (5.43)	114; 102 (4.50; 4)	228 (8.97)	-	-
PP 041E	8.0 - 12.0 (282 - 423)	100 - 140 (75 - 104)	2.20 (4.85)	192 (7.55)	138 (5.43)	102 (4)	228 (8.97)	140 (5.51)	9 (0.35)
PP 061	12.0 - 18.0 (423 - 635)	140 - 200 (104 - 150)	2.25 (4.95)	200 (7.56)	122 (4.80)	152; 133; 102 (6; 5.25; 4)	245 (9.64)	-	-
PP 061E	12.0 - 18.0 (423 - 635)	140 - 200 (104 - 150)	2.60 (5.70)	200 (7.56)	122 (4.80)	133; 102 (5.25; 4)	245 (9.64)	160 (6.30)	9 (0.35)
PP 091	18.0 - 21.0 (635 - 741)	200 - 300 (149 - 224)	3.00 (6.60)	214 (8.42)	140 (5.51)	133; 114 (5.25; 4.5)	280 (11.02)	-	-
PP 091E	18.0 - 21.0 (635 - 741)	200 - 300 (149 - 224)	3.50 (7.71)	228 (8.98)	140 (5.51)	133 (5.25)	280 (11.02)	140 (5.51)	9 (0.35)
PP 131	21.0 - 28.0 (741 - 988)	300 - 350 (224 - 261)	3.30 (7.25)	225 (8.86)	156 (6.14)	178; 152; 133 (7; 6; 5.25)	331 (13.03)	-	-
PP 141	28.0 - 30.0 (988 - 1053)	350 - 400 (261 - 300)	3.80 (8.40)	270 (10.62)	180 (7.09)	210; 178 (8.27; 7)	362 (14.25)	-	-

(1) In turbocharged or turbo-aftercooled engines the correct model selection is based on the maximum air flow. (2) In normally aspirated engines the model selection by horsepower range is just a recommendation. (3) The height "A" varies by diameter ØB. The value given is the tallest team in each family. (4) The diameters ØB (Outlet Size) are the standard inside diameters. From these the outlet tube can be adapted with reducing sleeves for a variety of smaller outlet choices. These sleeves are provided from Ø 7" to Ø 2.5" generally in 1/4" or 1/2" steps O'CUATRO s.a. has the right to modify the information contained in this brochure without its previous advise.



HOW THEY WORK

O'CUATRO Under Hood Engine Air Precleaners can be remote mounted or attached directly to the air cleaner, eliminating the need for an external air intake. Air enters the pre-cleaner through static vanes causing the air to spin. As the air spins, centrifugal force separates dust, dirt, insects, rain and snow from the air stream. The swirling air drives a high velocity rotor that acts as a blower, evacuating contaminants through special discharge ports in the side of the unit. Only purified air flows to the air cleaner.

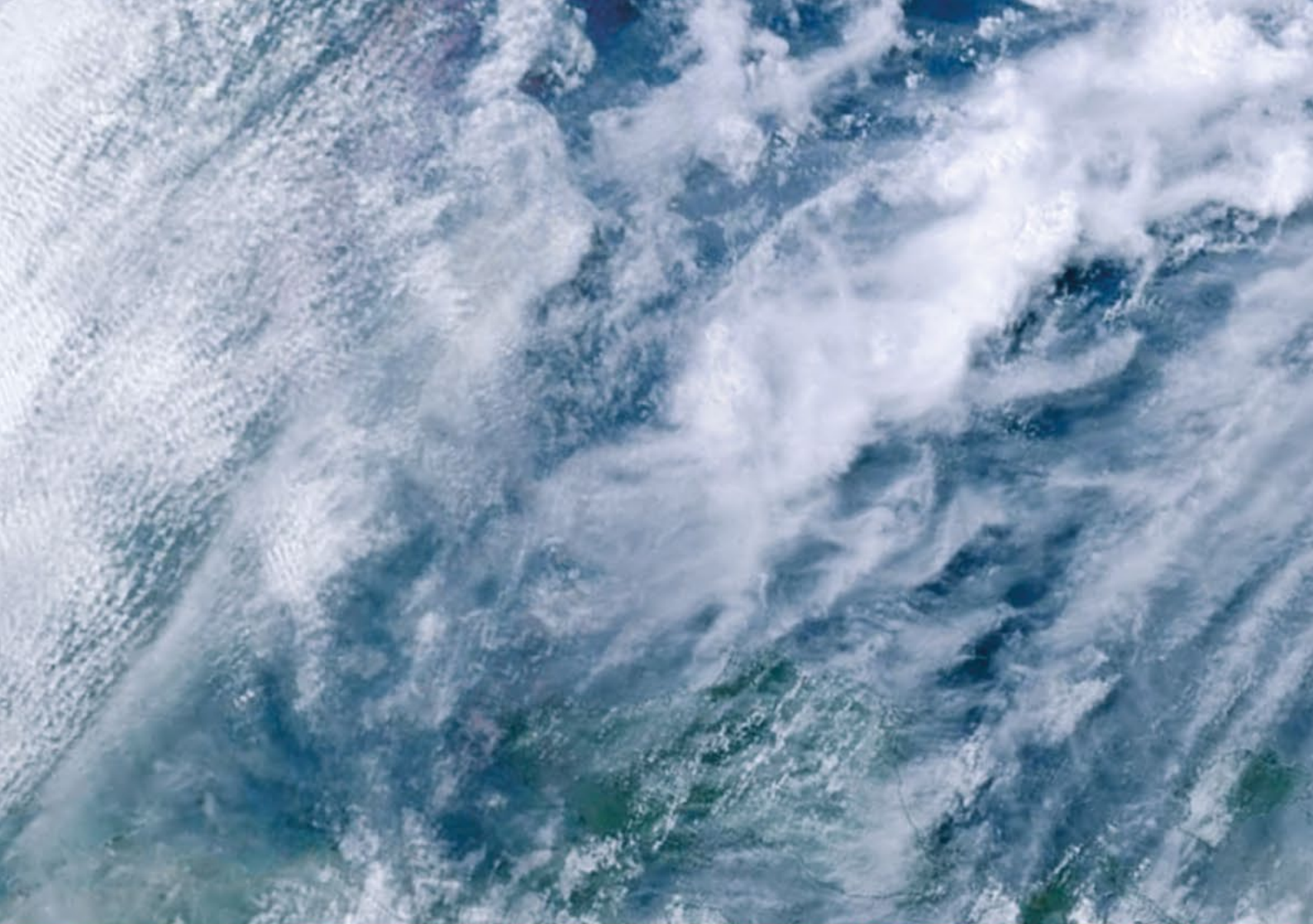
- 1. Discharge Ports
- 2. Rotor (spinner)
- 3. Two Ball Bearings
- 4. Housing
- 5. Static Vanes
- 6. Outlet Pipe (to air cleaner)
- 7. Clamp

APPLICATIONS

O'CUATRO Under Hood Engine Air Precleaners are designed to be mounted on or connected to the air filter intake of the gasoline, diesel or compressed natural gas engine air cleaner. Their compact size and shape makes mounting easy in under hood applications where space is limited. Their applications include trucks; pick ups; tractors; earth moving, construction and mining equipment; stationary engines; generator sets; snow removal equipment and street sweepers.



<p>90%</p> <p>EFFICIENCY Remove up to 90% of impurities from intake air before the air enters the filter elements.</p>	<p>10x</p> <p>AIR FILTER Extend engine air filter life up to 10 times.</p>	<p>50%</p> <p>LESS MAINTENANCE Reduce down time by up to 50%.</p>	<p>HIGHER SHELF LIFE Prolong engine and turbocharger life.</p>	<p>-10%</p> <p>SAVING Save up to 10% on fuel costs.</p>	<p>EASY TO INSTALL Each unit can provide up to three plastic adapters for air intake</p>	<p>VERSATILITY Wide range of applications and flow rates.</p>
<p>DURABILITY Steel housing, powder coat.</p>	<p>SELF-POWERED Requiring no electrical or exhaust gas power to dispose of separated particles.</p>	<p>SELF-CLEANING They require virtually no maintenance.</p>	<p>INSIDE No exterior vehicle modification for intake air.</p>	<p>AIR FLOW High air flow, low differential design.</p>		



advanced filtration technology

v10.14

OBLANSA



www.ocuatro.com

Sales Office

Ave. López y Planes 4401 (S3000DNJ) Santa Fe, Rep. Argentina
+54 342 4561515 / 4556587/8 - oblan@ocuatro.com

Manufacturing Plant

Highway Santa Fe-Rosario y Route 19 (3016) Santo Tomé, Rep. Argentina
+54 342 4752800 - tecnica@ocuatro.com

